

# Match the Sounds of the Bus to the Object!

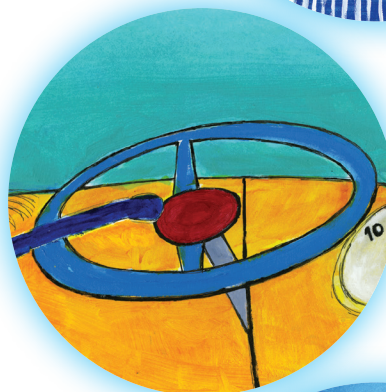
Draw a line from the sound to the correct word below.

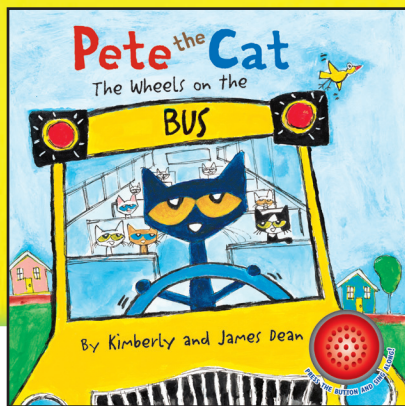
Woof, woof, woof!

Swish, swish, swish!

Beep, beep, beep!

Blink, blink, blink!





# Counting with Pete the Cat

Look at the picture below and count with Pete the Cat!

- 🐾 How many windows are on the bus? \_\_\_\_\_
- 🐾 How many cats are on the bus? \_\_\_\_\_
- 🐾 How many birds are on the bus? \_\_\_\_\_
- 🐾 How many dogs are on the bus? \_\_\_\_\_
- 🐾 How many guitars do you see? \_\_\_\_\_



Answer Key: (1) 7, (2) 7, (3) 1, (4) 1, (5) 1