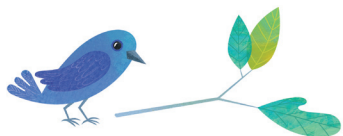


# Draw It

Beatrice imagines that she is a beautiful tree changing with the seasons. Draw the kind of tree you would like to be and color it in!





# Matching

There are four seasons, and trees can look different in each season! Match the picture of the tree to the right season.

WINTER

SPRING

SUMMER

FALL



A



B



C



D

ANSWER KEY: A = Fall, B = Summer, C = Winter, D = Spring